

2016 Field Program Schedule

This presentation is for discussion purposes only, as the 2016 Scope of Work has not yet been approved

January 14, 2016
EE4721-STN-EN-PN-0013

2016 Field Program Schedule

Task	Target Date
2015 Archaeology Walkover Survey Permit Report	March 31, 2016
2015 Archaeology Shovel Testing Permit Report	March 31, 2016
2016 AFRP Application for Walkover Survey	April 1, 2016
2016 AFRP Application for Shovel Testing	April 1, 2016
Recruitment and Hiring Process	March - April, 2016
Training and Orientation	April 2016
2016 Shovel Testing Field Work	May 2016
2016 Environmental Field Programs	June - July 2016

Energy East 2016 Archaeology Field Program

January 14, 2016



Agenda

1 Environmental Field Programs

2 Archaeological Program

3 Organization Chart

4 Roles and Responsibilities

2016 Environmental Field Programs

Archaeological Walkover Surveys

- Remaining portions of linear corridor
- One possible Pump Station footprint change
- Potential access roads

Vegetation and Wetlands

- > 1 month of field work
- Surveys of local wetlands and rare plants

Wildlife

- > 1 month of field work
- Surveys to assess and collect data on habitats and signs of wildlife, including species of management concern

* The 2016 scope of work has not yet been finalized

2016 Archaeological Shovel Testing Program

Shovel Testing

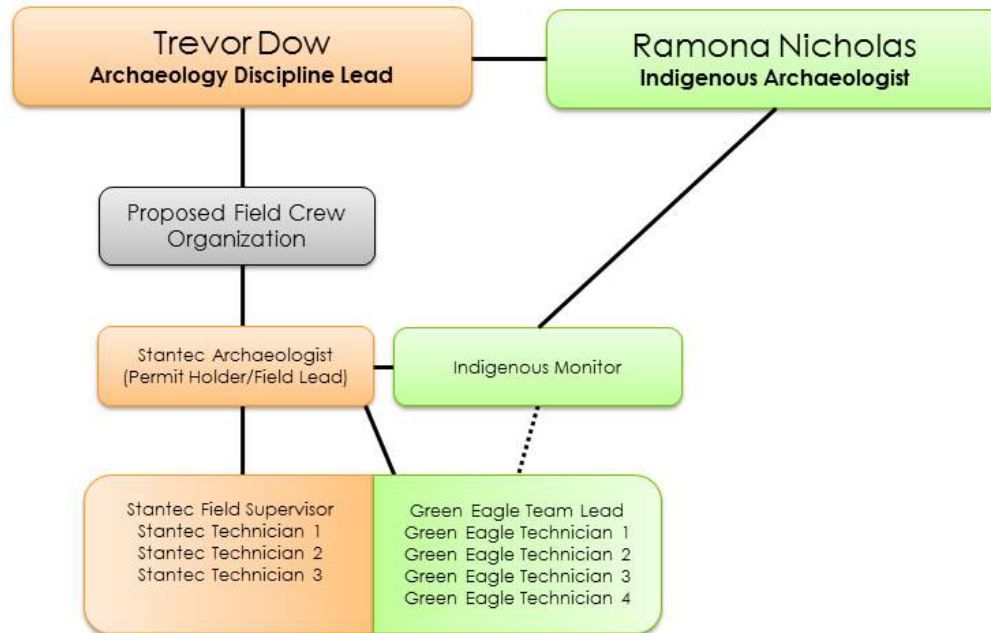
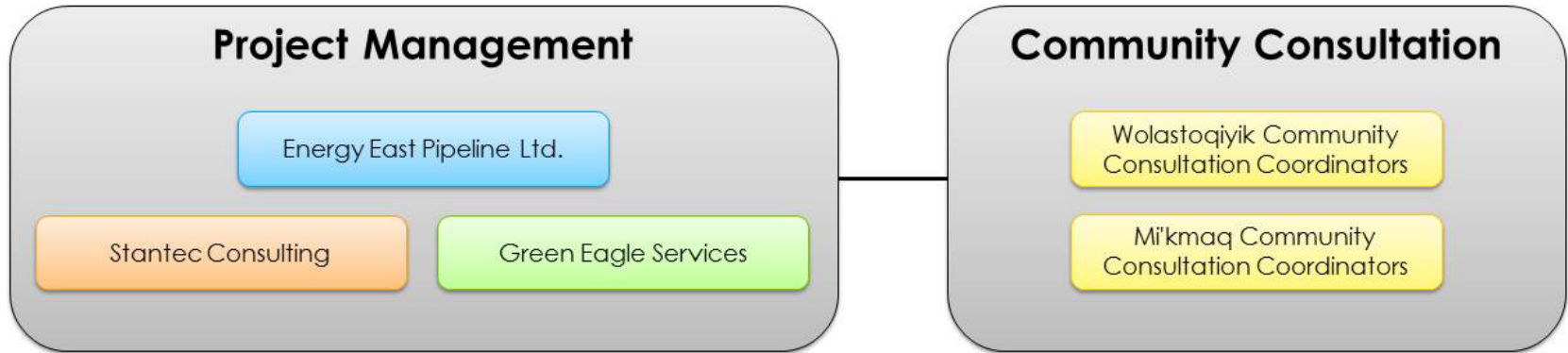
- Expected to be limited to Crown, Freehold, JDI and IOL lands

*The 2016 scope of work has not yet been finalized

Organization Chart

- Example of the proposed structure of one field crew
- Once our scope of work has been defined additional field crews and personnel may be added to this Organization Chart

Energy East 2016 Archaeology Program Organization Chart



Roles and Responsibilities

GREEN EAGLE	STANTEC	ENERGY EAST
<ul style="list-style-type: none">• Administer day-to-day Indigenous Participant program• Complete payroll, payroll reporting, per diem calculations, project reporting• Liaison with Stantec on project evolution and needs.• Ensure participants have all equipment, supplies• Address employment questions or concerns raised by Indigenous Participants• Ensure Indigenous Participants are receiving valuable experience• Collect and review reporting	<ul style="list-style-type: none">• Provide field training and supervision to participants• Work with Green Eagle to ensure communications are in place, information on the project is shared with both the Green Eagle and Energy East• Report activities and results to Energy East• Work with Green Eagle to develop and evolve the project to maximize its benefit for Indigenous Participants	<ul style="list-style-type: none">• Meet regularly with all parties and facilitate information exchange on and involvement in the program• Oversee Aboriginal Training and contracting opportunities through employment and procurement initiatives• Report activities and results back to the First Nations communities

Questions?

stantec.com

